

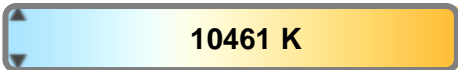
Light efficiency:



Light quality:



Color temperature:



Output: 1269 lm
Peak: 24236 cd
Power: 46.6 W
PF: 0.97



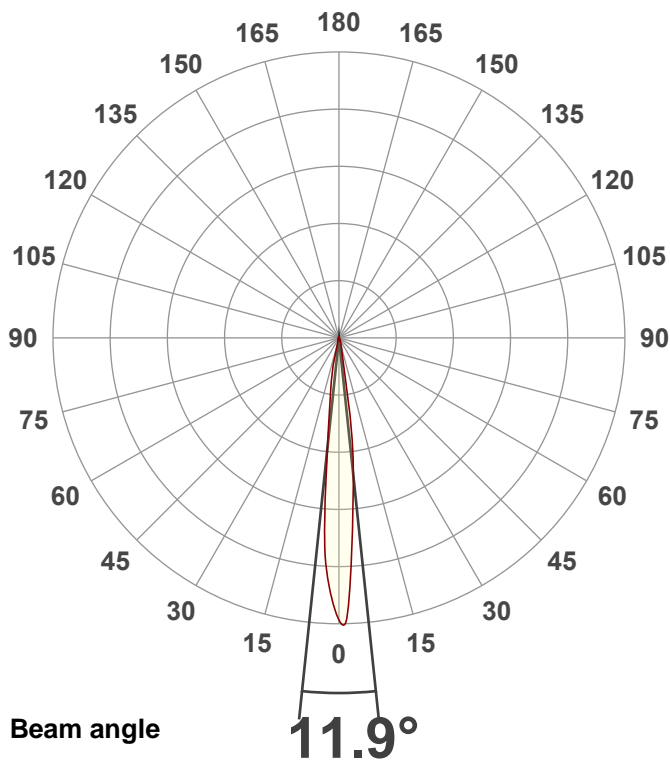
Tracking number: [n/a](#)

Product name:
ElectraPix Par 7

Item number:
Full On No UV

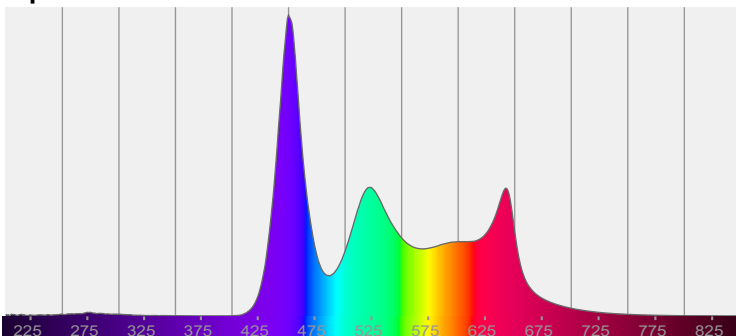
Date and time:
9/4/2024 12:47:30 PM

Description:

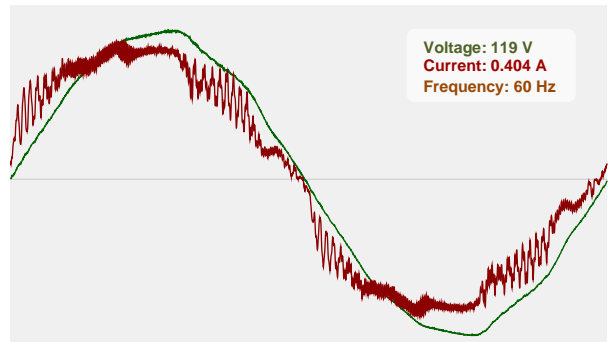


CIE 1931
x: 0.285
y: 0.273

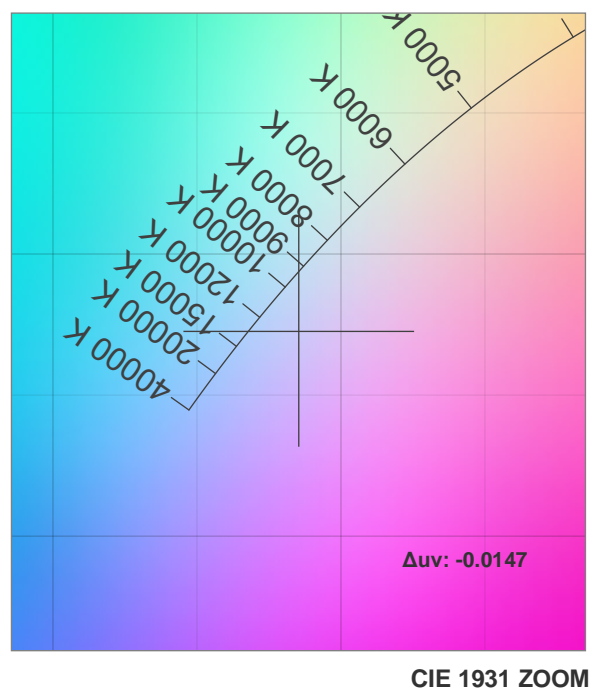
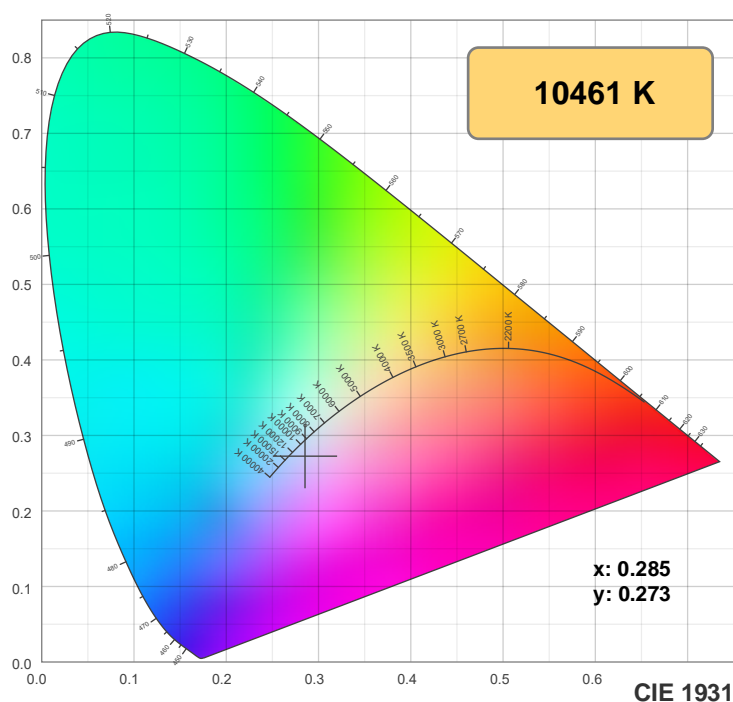
Spectra



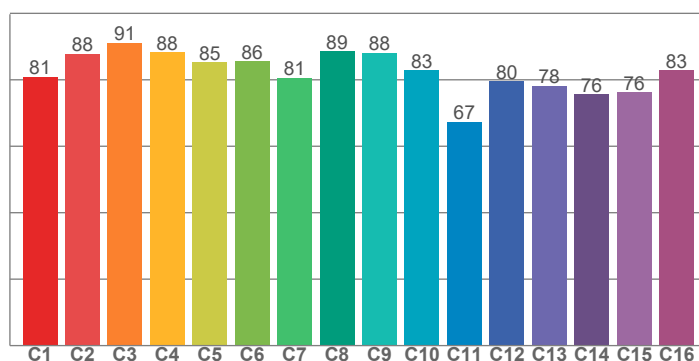
Power



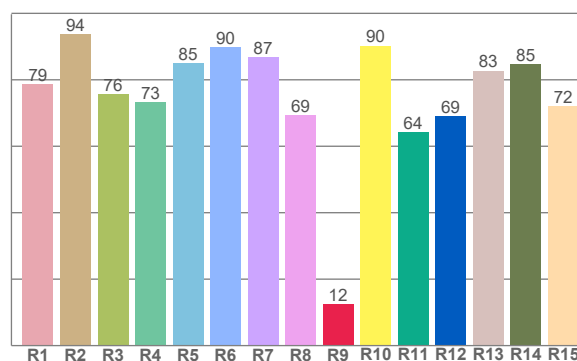
Color details



TM-30: 83.6



CRI: 81.5 (R1-R8)



CRI R values, only R1-R8 are used to calculate final CRI value

R1	R2	R3	R4	R5	R6	R7	R8	R9	R10	R11	R12	R13	R14	R15
78.7	93.6	75.8	73.2	85.0	89.8	86.8	69.3	12.5	90.3	64.1	69.1	82.7	84.7	72.1

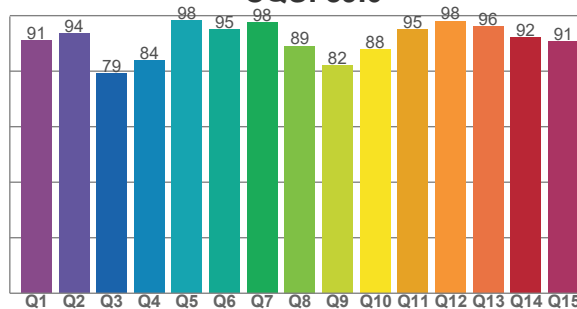
TM30 C values, 16 binned values out of total of 99 C values

C1	C2	C3	C4	C5	C6	C7	C8	C9	C10	C11	C12	C13	C14	C15	C16
80.9	87.8	91.2	88.3	85.2	85.7	80.5	88.7	88.2	82.8	67.4	79.5	78.2	75.7	76.2	82.9

CQS Q values

Q1	Q2	Q3	Q4	Q5	Q6	Q7	Q8	Q9	Q10	Q11	Q12	Q13	Q14	Q15
91.1	93.6	79.1	83.9	98.3	95.0	97.6	89.0	82.0	87.9	95.1	98.0	96.0	92.1	90.7

CQS: 89.6



Color parameters

Color temperature	Color rendering index	Red component	Color fidelity	Color gamut	Color quality scale	Color coordinate cie 1931	Color coordinate cie 1931	Color coordinate	Color coordinate	Color deviation from black body
CCT	CRI	CRI R9	TM30 Rf	TM30 Rg	CQS	x	y	u	v	Δuv
10461 K	81.5	12.5	83.6	110.1	89.6	0.285	0.273	0.200	0.287	-0.0147

TM-30 details

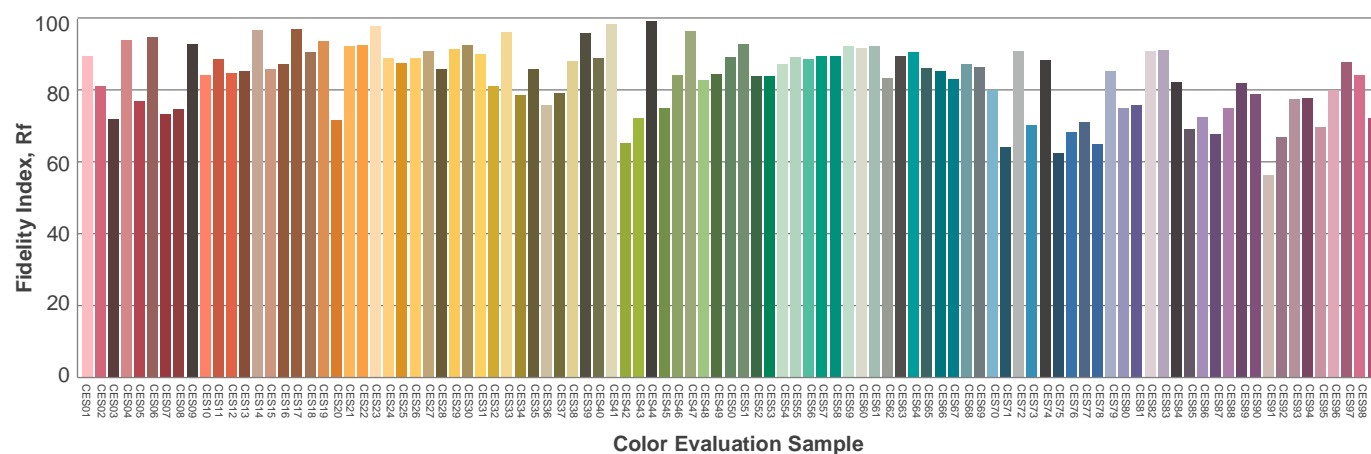
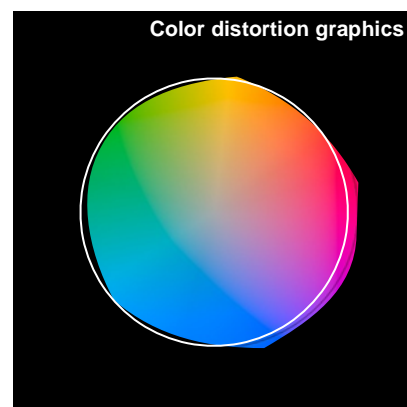
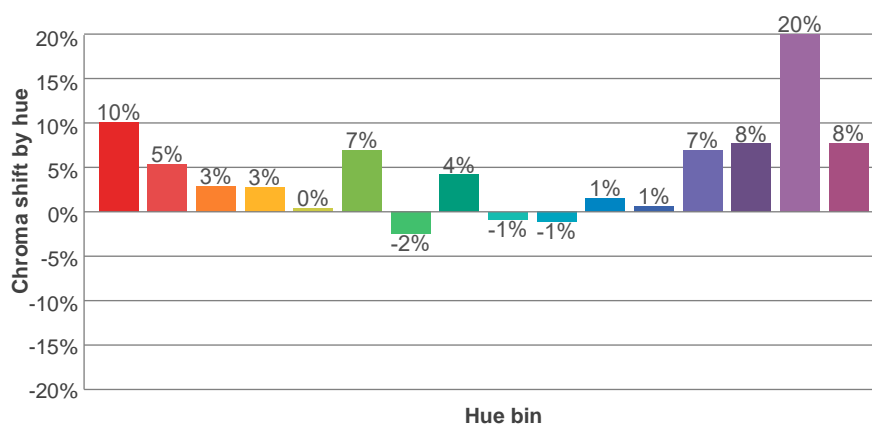
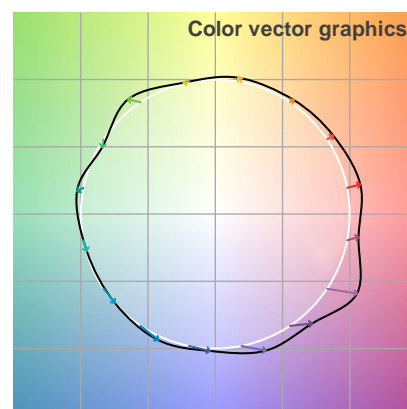
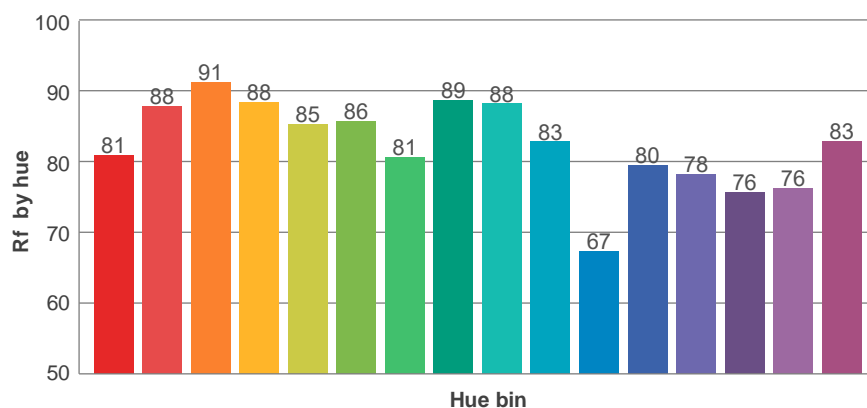
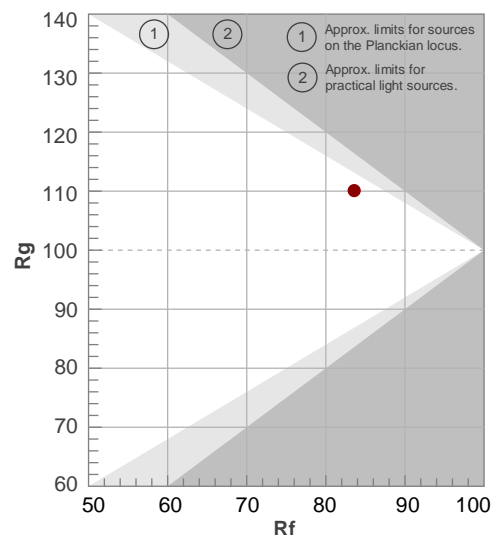
Rf 83.6

Fidelity index Rf

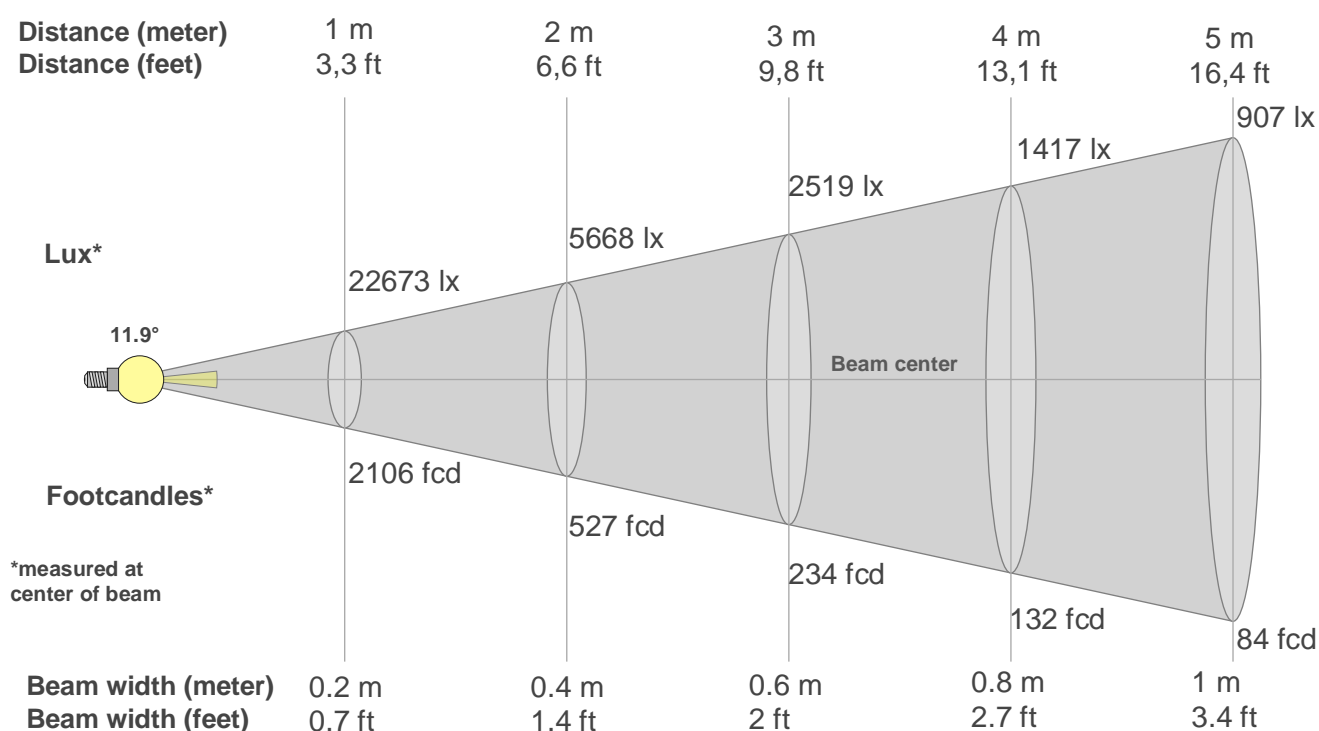
Rg 110.1

Gamut index Rg

Hue Bin	R _i	Shifts (%)	
		Chroma	Hue
1	81	10%	1%
2	88	5%	0%
3	91	3%	-1%
4	88	3%	3%
5	85	0%	4%
6	86	7%	7%
7	81	-2%	5%
8	89	4%	3%
9	88	-1%	8%
10	83	-1%	13%
11	67	1%	17%
12	80	1%	16%
13	78	7%	17%
14	76	8%	15%
15	76	20%	9%
16	83	8%	4%



Beam details



Beam intensities from 1-20m

1m	2m	3m	4m	5m	6m	7m	8m	9m	10m	11m	12m	13m	14m	15m	16m	17m	18m	19m	20m
3.3ft	6.6ft	9.8ft	13.1ft	16.4ft	19.7ft	23ft	26.2ft	29.5ft	32.8ft	36.1ft	39.4ft	42.7ft	45.9ft	49.2ft	52.5ft	55.8ft	59.1ft	62.3ft	65.6ft
22673lx	5668lx	2519lx	1417lx	907lx	630lx	463lx	354lx	280lx	227lx	187lx	157lx	134lx	116lx	101lx	89lx	78lx	70lx	63lx	57lx
2106.4fcd	526.6fcd	234fcd	131.6fcd	84.3fcd	58.5fcd	43fcd	32.9fcd	26fcd	21.1fcd	17.4fcd	14.6fcd	12.5fcd	10.7fcd	9.4fcd	8.2fcd	7.3fcd	6.5fcd	5.8fcd	5.3fcd

Intensities in 0° c-plane

0°	1°	2°	3°	4°	5°	6°	7°	8°	9°	10°	11°	12°	13°	14°	15°	16°	17°	18°	19°
22.7K	23.8K	22.7K	20.0K	17.3K	14.7K	12.0K	9.8K	7.9K	6.0K	4.1K	2.2K	1.2K	1.0K	0.8K	0.6K	0.3K	0.2K	0.2K	0.2K
100%	105%	100%	88%	77%	65%	53%	43%	35%	26%	18%	10%	6%	5%	4%	3%	2%	1%	1%	1%

Intensities in 90° c-plane

0°	1°	2°	3°	4°	5°	6°	7°	8°	9°	10°	11°	12°	13°	14°	15°	16°	17°	18°	19°
22.7K	23.8K	22.7K	20.0K	17.3K	14.7K	12.0K	9.8K	7.9K	6.0K	4.1K	2.2K	1.2K	1.0K	0.8K	0.6K	0.3K	0.2K	0.2K	0.2K
100%	105%	100%	88%	77%	65%	53%	43%	35%	26%	18%	10%	6%	5%	4%	3%	2%	1%	1%	1%

Intensities in 180° c-plane

0°	1°	2°	3°	4°	5°	6°	7°	8°	9°	10°	11°	12°	13°	14°	15°	16°	17°	18°	19°
22.7K	21.6K	20.5K	19.4K	17.6K	14.8K	12.0K	9.2K	6.5K	4.5K	3.6K	2.8K	1.9K	1.1K	0.5K	0.4K	0.3K	0.1K	0.0K	0.0K
100%	95%	90%	85%	77%	65%	53%	41%	29%	20%	16%	12%	8%	5%	2%	2%	1%	1%	0%	0%

Intensities in 270° c-plane

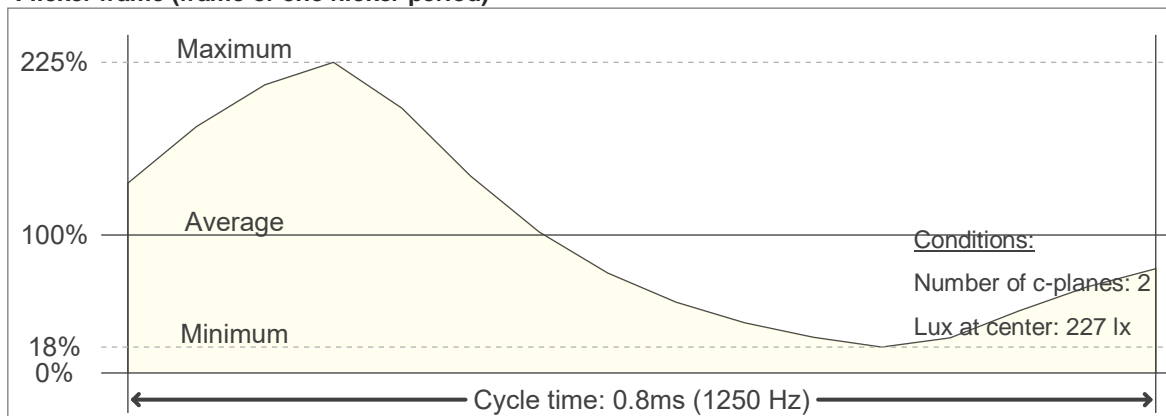
0°	1°	2°	3°	4°	5°	6°	7°	8°	9°	10°	11°	12°	13°	14°	15°	16°	17°	18°	19°
22.7K	21.6K	20.5K	19.4K	17.6K	14.8K	12.0K	9.2K	6.5K	4.5K	3.6K	2.8K	1.9K	1.1K	0.5K	0.4K	0.3K	0.1K	0.0K	0.0K
100%	95%	90%	85%	77%	65%	53%	41%	29%	20%	16%	12%	8%	5%	2%	2%	1%	1%	0%	0%

Beam angle 50%	Field angle 10%	Cutoff angle 2,5%	Intensity ratio in 120° cone	Intensity ratio in 90° cone
11.9°	22.3°	28.4°	96.8%	96.3%

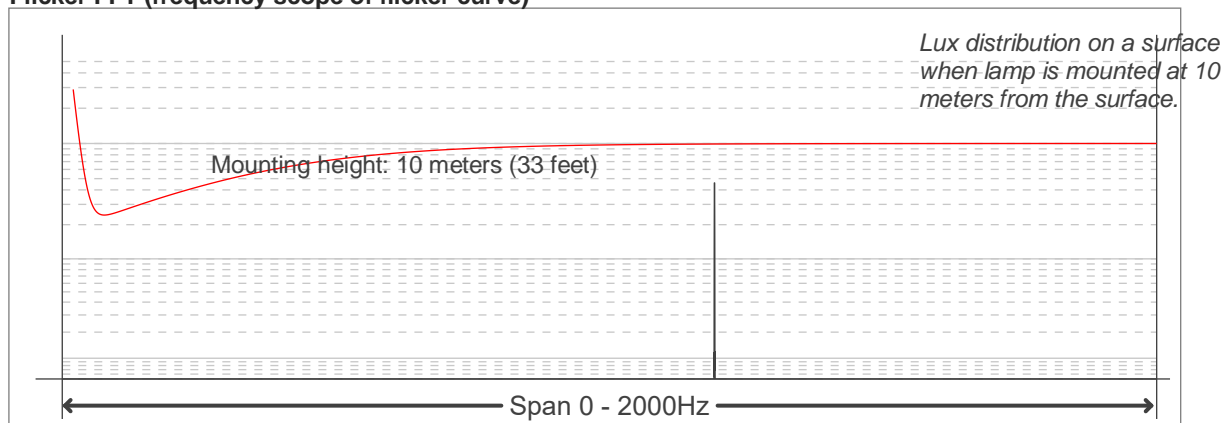
Flicker

Flicker curve (complete sampled flicker signal)

Flicker frame (frame of one flicker period)



Flicker FFT (frequency scope of flicker curve)



Flicker results:

Flicker frequency:		1250 Hz	
Flicker index:	0.3	JA8/10 40Hz	1.51 %
Flicker percentage:	95.58 %	JA8/10 90Hz	3.42 %
SVM: (Visual flicker)	0.93	JA8/10 200Hz	7.79 %
PstLM	0.03	JA8/10 400Hz	16.27 %
Mp	0.27	JA8/10 1000Hz	52.05 %

Flicker conditions:

Sample rate:	20000 samples/second
--------------	----------------------